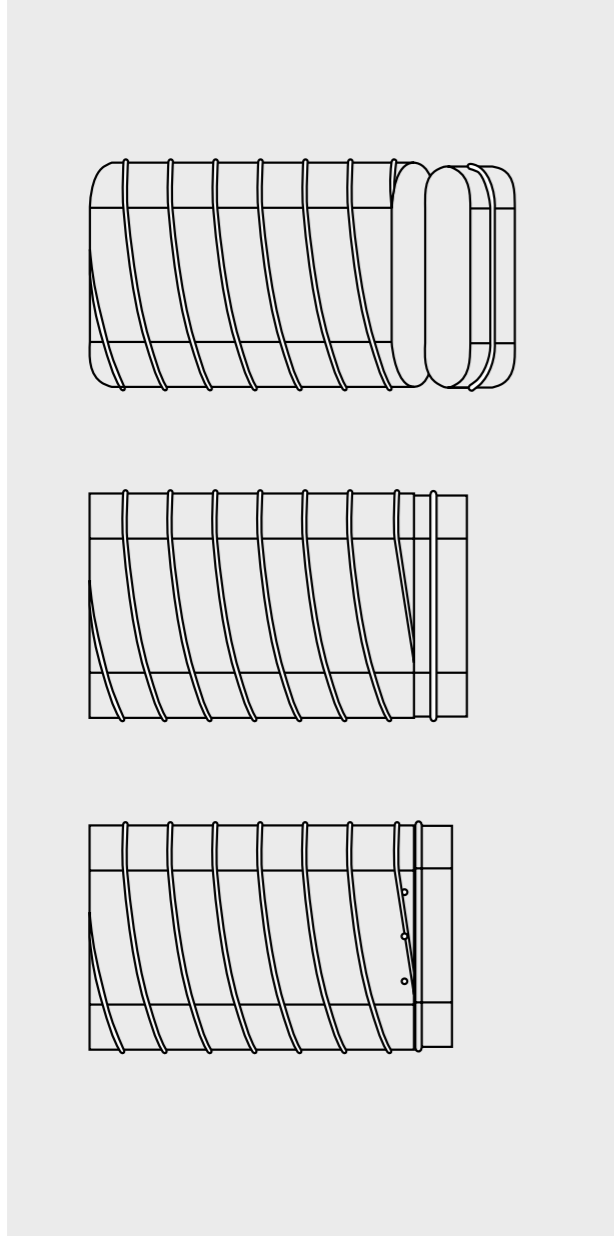




# OVAL DUCT & FITTINGS

---



**Description**

SAFID Oval must be assembled according to these instructions:

**Before Assembly**

The Duct must be free from dirt.

**Assembly of Instructions:**

- Only use undamaged Safid Oval duct and fittings.
- Slip the fitting into the flat oval duct up to the bead.
- Fasten the duct and fitting together with self-tapping sheet metal screws or pressure-proof pop rivets.

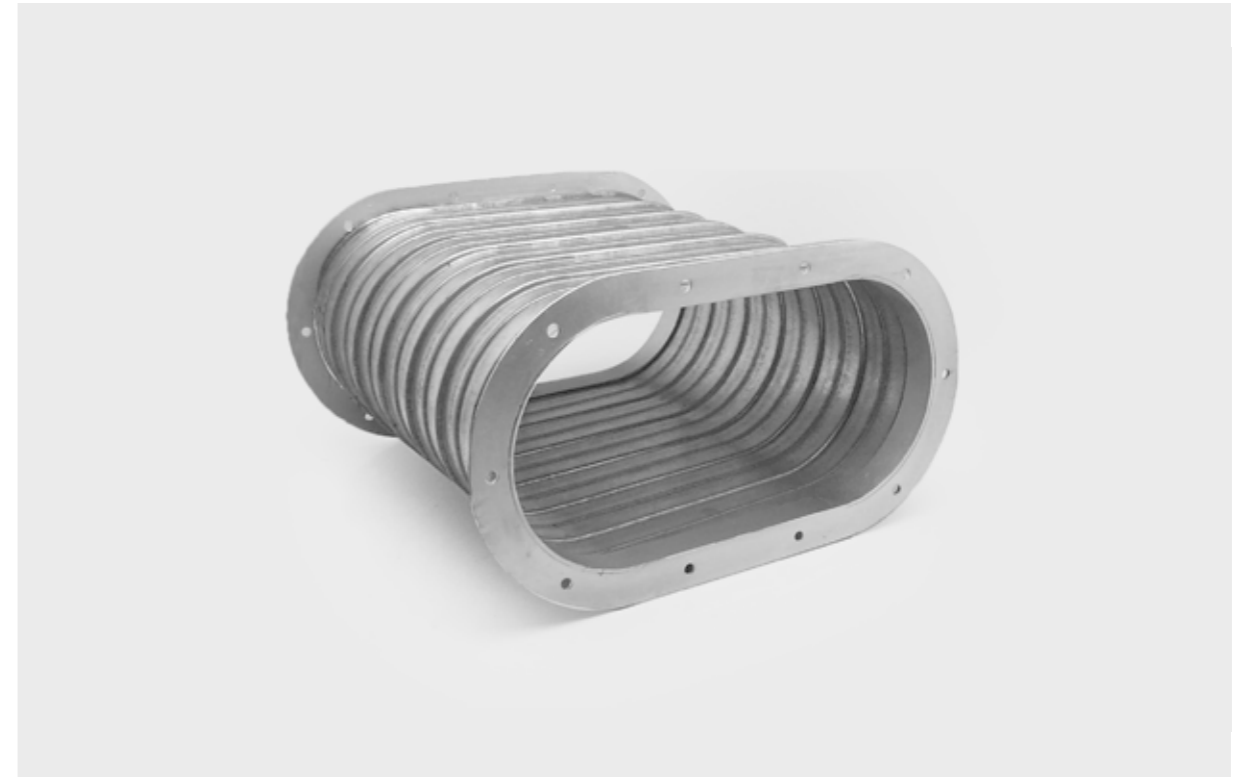
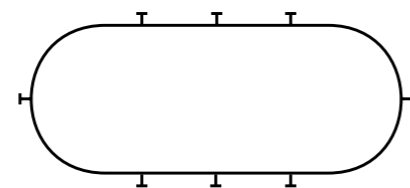
The below numbers and dimensions of steel screws or pop rivets are recommended:

Circumference mm	Min. Diameter mm	Number
1171 - 1222	3.2	4
1228 - 1829	4.0	6
1835 - 2442	4.0	8
2478 - 3043	4.0	10
3056 - 3671	4.8	12
3685 - 4171	4.8	14

Placement of the fastening screws should be opposite from one another evenly spaced around the circumference, much like the procedure for tightening lug nuts on a tire. Start where the distance between the duct and the fitting is largest. In event of incorrect installation, holes caused by screws or pop rivets must be sealed before re-assembly.

$$\text{Circumference} = (W-H) \times 2 + (H \times 3.1416)$$

Where: W = Major Dimension ; H = Minor Dimension



**OVAL DUCT**

**Introduction**

The SAFID Oval duct system requires both lower installation costs and operating cost due to the system's low leakage and reduced pressure loss performance. This system is available for low, medium and high pressure systems meeting SMACNA 2005 3rd Edition and DW144 specifications and requirements.

**Construction**

SAFID Oval is produced by stretching circular spiral wound ductwork over semicircular forming heads to preset dimensions. Sizes are from 500mm x 150mm to 1800mm x 500mm and delivered in lengths of 2 meters and 4 meters as standards - with other lengths available on request. Flat oval duct is available with a longitudinal seam construction for applications that require very heavy gauges or large sizes. The ducts longitudinal seam is fully welded. Standard products are normally manufactured from hot dip galvanized steel sheet or coil all as specified in SMACNA and DW 144 standards.

**Application**

The SAFID Oval duct system is designed for use in places with restricted headroom and is especially suitable for lengthy duct systems with relatively few branchings and outlets. SAFID Oval is ideal for voids with space limitations, risers with the added bonus of lower airflow resistance and fewer joints and supports required.

FLAT OVAL DUCT

Construction Standards (as per SMACNA 2005 3rd Edition - 500Pa to 2500Pa Pressure Class)

Major Dimension Duct Width	Spiral Seam Duct		Longitudinal Seam Duct Gauge	Fittings Gauge
	Gauge			
	Gauge	Profile		
500 - 600	24	SKG	20	20
650 - 900	24	SPKG	20	20
950 - 1200	24	SPKG	18	18
1250 - 1500	22	SPKG	18	18
1550 - 1650	22	SPKG	16	16
1700 - 1800	20	SPKG	16	16
1850 AND ABOVE	18	SMKG	16	16

\* SPKG Profile offers a self supporting lower gauge construction, which is an economical alternative.

Profiles:



Standard Length

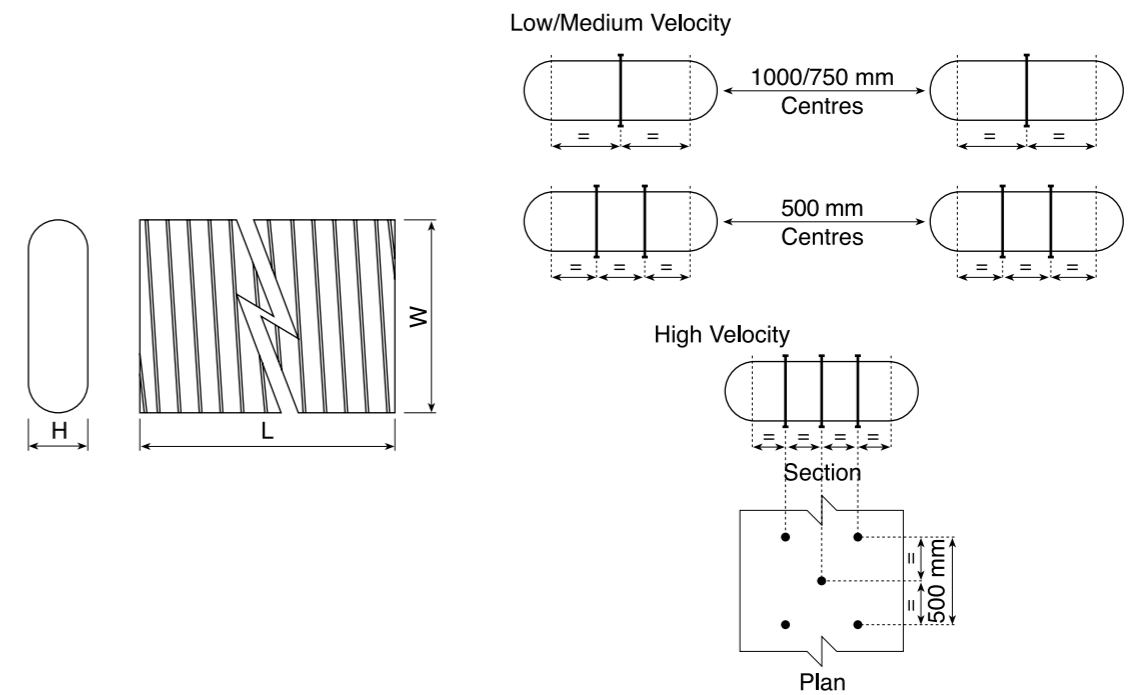
Spiral Seam Duct = 4 meters  
Longitudinal Seam Duct = 1 meter

FLAT OVAL DUCT

Construction Standards (as per DW 144)

Major Dimension Duct Width	Spiral Seam Duct		Longitudinal Seam Duct Gauge	Fittings Gauge
	Gauge			
	SPKG			
500 - 850	22		20	20
875 - 1500	20		18	18
1525 - OVER	20		16	16

Dimensions



STANDARD FLAT OVAL DUCT SIZES



Flat Oval Size		Equivalent Duct Diameter
H	W	
150	500	283
150	525	289
150	550	296
150	575	302
150	600	307
150	625	313
150	650	318
150	675	324
150	700	329
150	725	334
150	750	339
150	775	343
150	800	348
150	825	353
150	850	357
150	875	361
150	900	366
150	925	370
150	950	374
150	975	378
150	1000	382
150	1025	386
150	1050	390
150	1075	394
150	1100	398
200	500	330
200	525	338
200	550	345
200	575	353
200	600	360
200	625	367
200	650	373
200	675	380
200	700	386
200	725	392
200	750	398
200	775	404
200	800	410
200	825	415
200	850	421
200	875	426
200	900	431

Flat Oval Size		Equivalent Duct Diameter
H	W	
200	925	437
200	950	442
200	975	447
200	1000	451
200	1025	456
200	1050	461
200	1075	466
200	1100	470
200	1125	475
200	1150	479
200	1175	483
200	1200	488
200	1225	492
200	1250	496
200	1275	500
200	1300	504
250	500	370
250	525	379
250	550	388
250	575	396
250	600	405
250	625	413
250	650	420
250	675	428
250	700	435
250	725	443
250	750	450
250	775	457
250	800	463
250	825	470
250	850	476
250	875	482
250	900	489
250	925	495
250	950	501
250	975	506
250	1000	512
250	1025	518
250	1050	523
250	1075	529
250	1100	534
250	1125	539



Flat Oval Size		Equivalent Duct Diameter
H	W	
250	1150	544
250	1175	549
250	1200	554
250	1225	559
250	1250	564
250	1275	569
250	1300	574
250	1325	578
250	1350	583
250	1375	588
250	1425	597
250	1450	601
250	1475	605
250	1500	610
250	1525	614
250	1550	618
250	1575	622
250	1600	626
250	1625	630
250	1650	634
250	1675	638
250	1700	642
250	1725	646
250	1750	650
250	1775	654
300	600	444
300	625	453
300	650	462
300	675	470
300	700	479
300	725	487
300	750	495
300	775	503
300	800	511
300	825	518
300	850	525
300	875	533
300	900	540
300	925	546
300	950	553
300	975	560
300	1000	566

STANDARD FLAT OVAL DUCT SIZES

Flat Oval Size		Equivalent Duct Diameter
H	W	
300	1025	573
300	1050	579
300	1075	585
300	1100	591
300	1125	597
300	1150	603
300	1175	609
300	1200	614
300	1225	620
300	1250	626
300	1275	631
300	1300	636
300	1325	642
300	1350	647
300	1400	657
300	1425	662
300	1450	667
300	1475	672
300	1500	677
300	1525	682
300	1550	687
300	1575	691
300	1600	696
300	1625	701
300	1650	705
300	1675	710
300	1700	714
300	1725	719
300	1750	723
300	1800	732
400	600	508
400	625	520
400	650	531
400	675	542
400	700	552
400	725	562
400	750	572
400	775	582
400	800	591
400	825	601
400	850	610
400	875	619

SAFID OVAL

SAFID OVAL

SAFID OVAL

SAFID OVAL

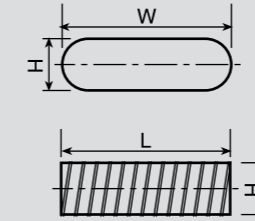
## STANDARD FLAT OVAL DUCT SIZES

Flat Oval Size		Equivalent Duct Diameter
H	W	
400	900	627
400	925	636
400	950	644
400	975	652
400	1000	660
400	1025	668
400	1050	676
400	1075	683
400	1100	691
400	1125	698
400	1150	705
400	1175	712
400	1200	719
400	1225	726
400	1250	733
400	1275	740
400	1300	746
400	1350	759
400	1375	766
400	1400	772
400	1425	778
400	1450	784
400	1475	790
400	1500	796
400	1525	802
400	1550	808
400	1575	814
400	1600	819
400	1625	825
400	1650	831
400	1675	836
400	1700	841
400	1725	847
400	1750	852
400	1775	857
400	1800	863
500	600	560
500	625	573
500	675	599
500	700	612
500	725	624
500	750	636

Flat Oval Size		Equivalent Duct Diameter
H	W	
500	775	647
500	800	658
500	825	669
500	850	680
500	875	690
500	900	700
500	925	711
500	950	720
500	975	730
500	1000	739
500	1025	749
500	1050	758
500	1075	767
500	1100	775
500	1125	784
500	1150	793
500	1175	801
500	1200	809
500	1225	817
500	1250	825
500	1275	833
500	1300	841
500	1325	849
500	1350	856
500	1375	864
500	1400	871
500	1425	878
500	1450	885
500	1475	892
500	1500	899
500	1525	906
500	1550	913
500	1575	920
500	1600	926
500	1625	933
500	1650	940
500	1675	946
500	1700	952
500	1725	959
500	1750	965
500	1775	971
500	1800	977

## FLAT OVAL SPIRAL SEAMED DUCT

### Dimensions



### Description

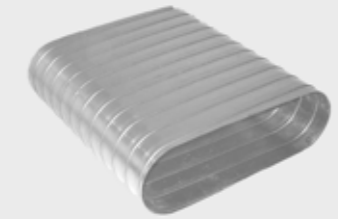
- Flat Oval Spiral Seamed Duct.
- Standard Length is 4000 mm.

### Ordering

Product Code: SKG - aaa x bbb

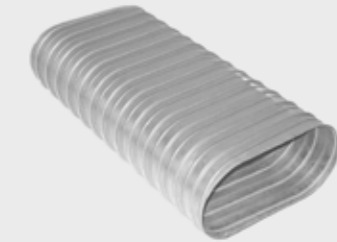
Type \_\_\_\_\_  
 W \_\_\_\_\_  
 H \_\_\_\_\_

SKG



SPKG

(with External Corrugations)



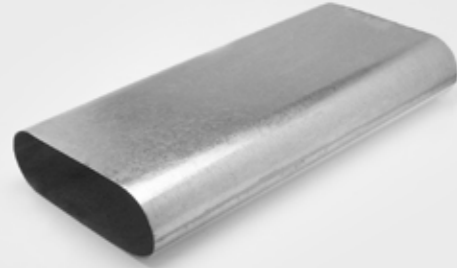
W mm	H mm
500	150
600	150
600	200
800	200
500	250
600	250
800	250
1000	250
600	300
800	300
1000	300
1200	300
600	400
800	400
1000	400
1200	400
1400	400
1600	400

W mm	H mm
1000	500
1200	500
1400	500
1600	500
1700	500
1800	500

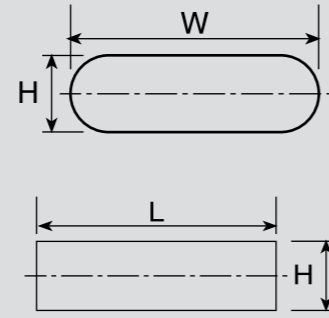
- Non standard sizes available as longitudinal seamed flat oval duct.
- For other available sizes, see pages 134 - 136.



**SMKG**



**Dimensions**



**Description**

- Longitudinal Seam Flat Oval Straight Duct
- Standard Length is 1000 mm.

**Ordering**

Product Code: SMKG - aaa x bbb

Type \_\_\_\_\_

W \_\_\_\_\_

H \_\_\_\_\_

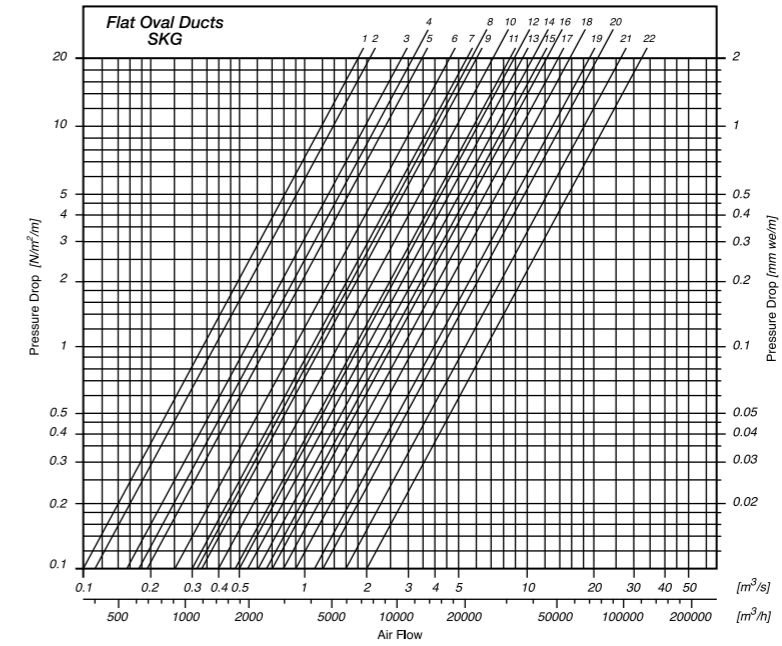
W mm	H mm
500	150
600	150
600	200
800	200
500	250
600	250
800	250
1000	250
600	300
800	300
1000	300
1200	300
600	400
800	400
1000	400
1200	400
1400	400

W mm	H mm
1600	400
1000	500
1200	500
1400	500
1600	500
1700	500
1800	500

• For other available sizes, see pages 134 - 136.

**FLAT OVAL DUCT**

**Technical Data**



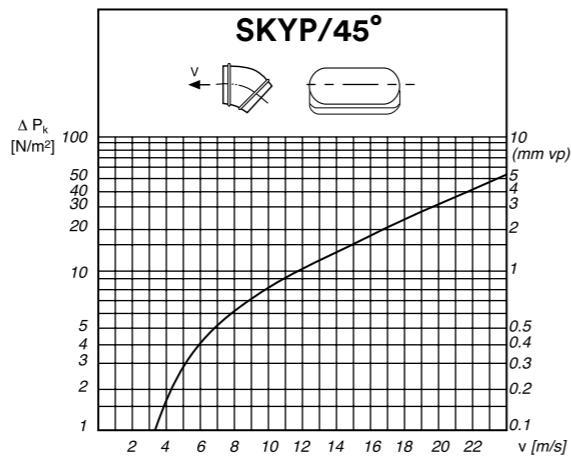
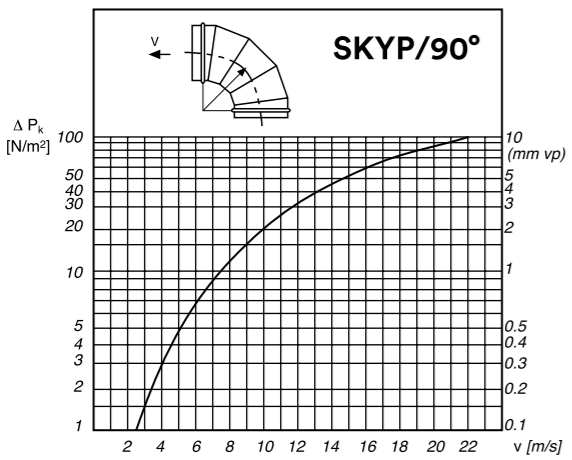
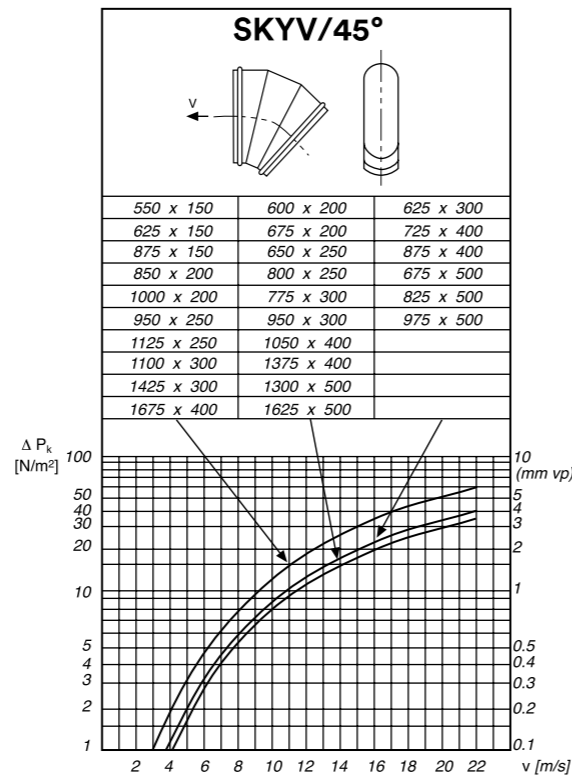
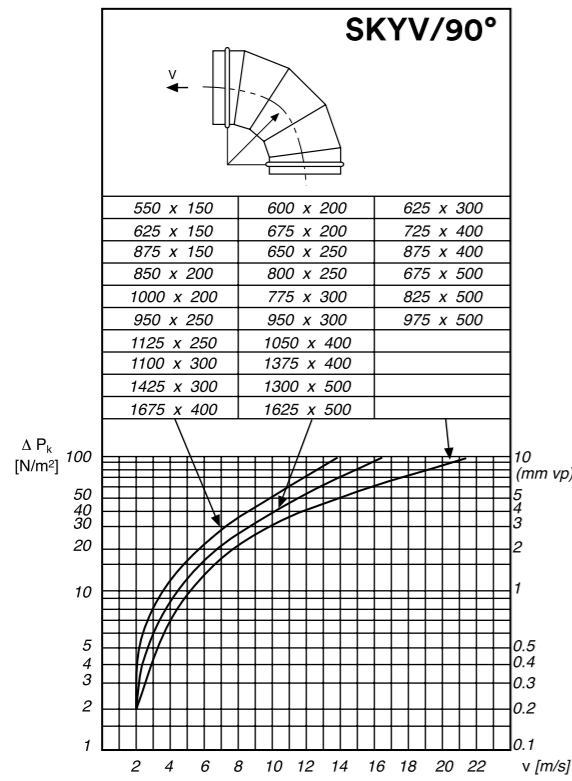
**SIZES**

	W x H
1	550 x 150
2	625 x 150
3	600 x 200
4	875 x 150
5	675 x 200
6	650 x 250
6	850 x 200
7	1000 x 200
8	625 x 300
9	800 x 250
10	775 x 300
10	950 x 250
11	1125 x 250

	W x H
12	950 x 300
13	725 x 400
14	1100 x 300
15	675 x 500
16	875 x 400
17	1425 x 300
18	825 x 500
18	1050 x 400
19	975 x 500
20	1375 x 400
21	1300 x 500
22	1625 x 500

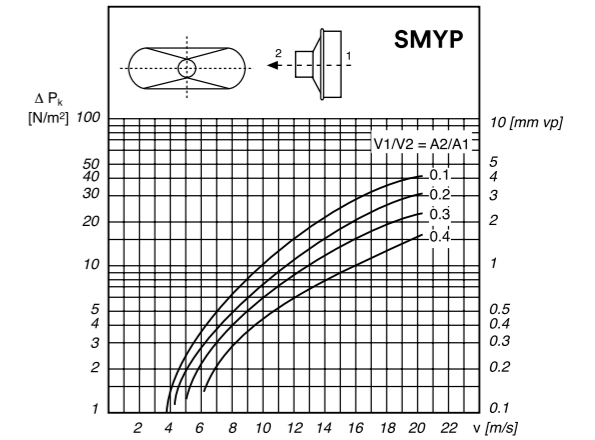
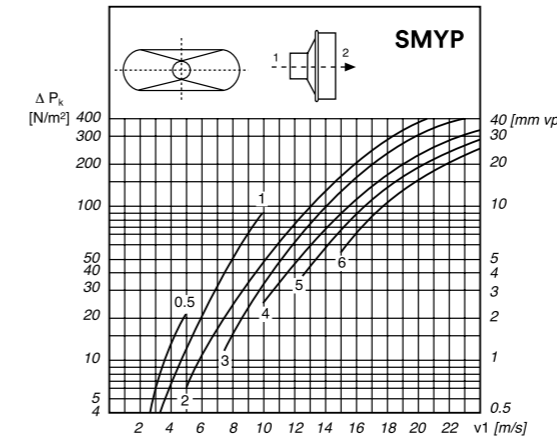
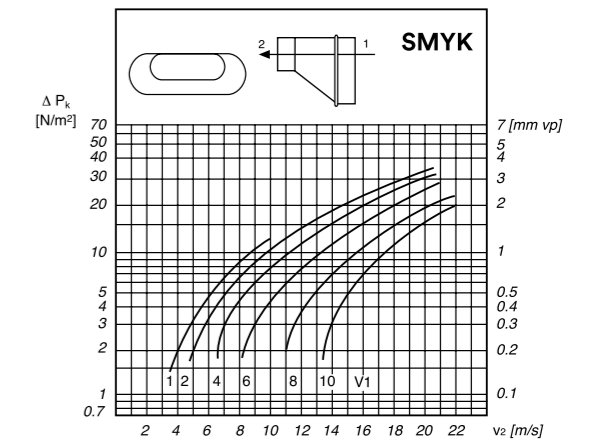
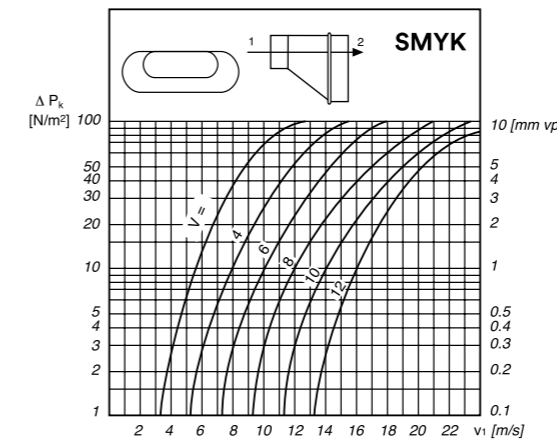
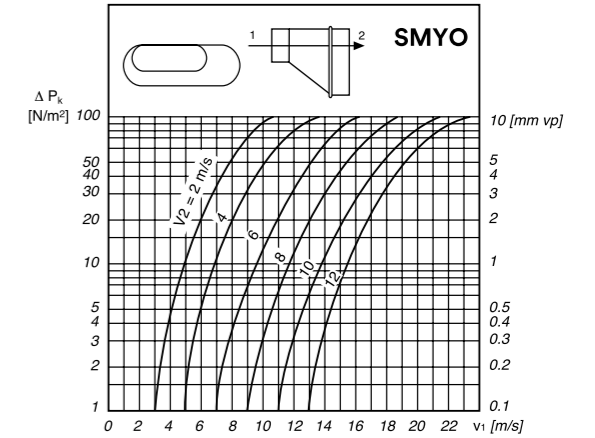
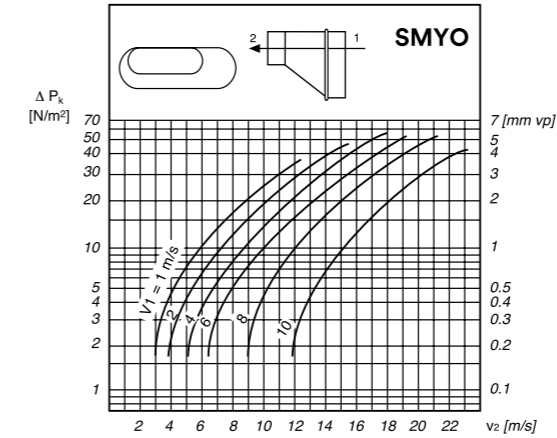
FLAT OVAL FITTINGS

Technical Data



FLAT OVAL FITTINGS

Technical Data

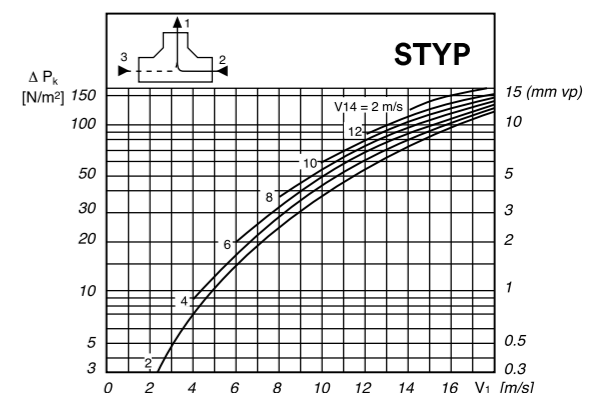
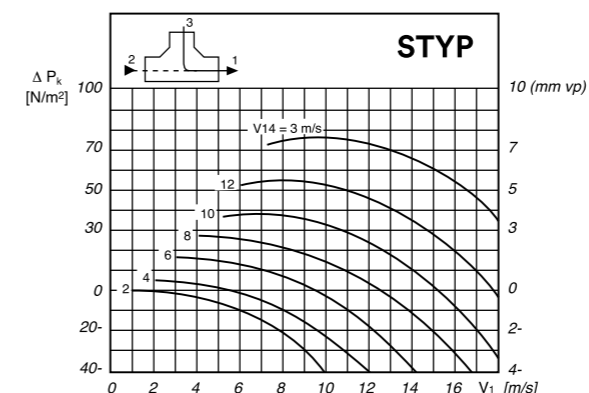
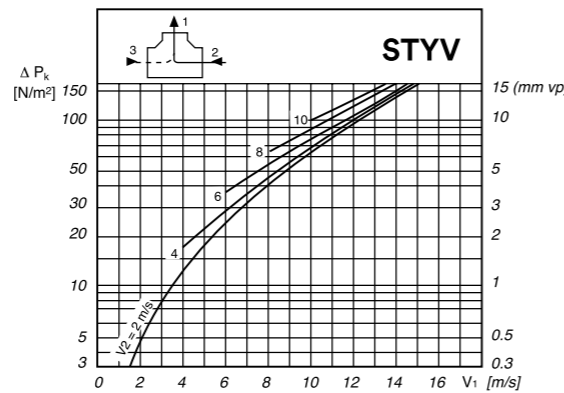
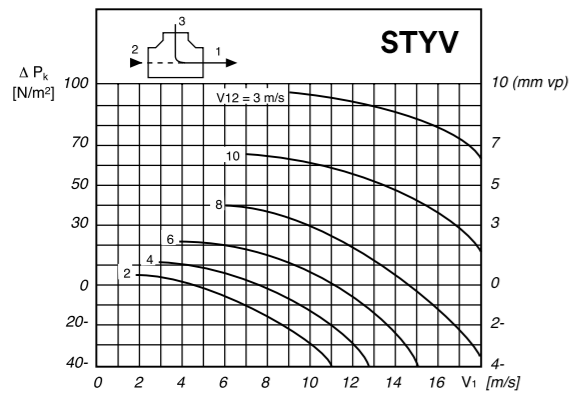
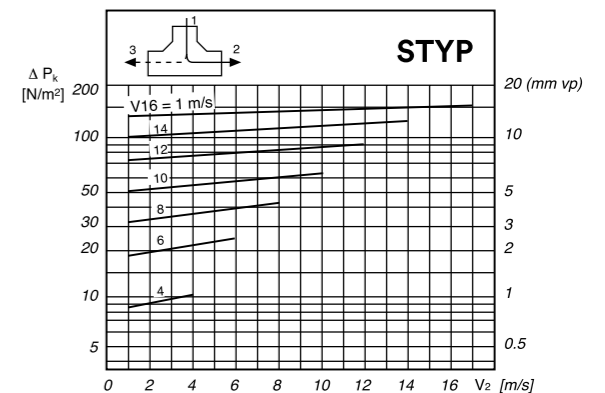
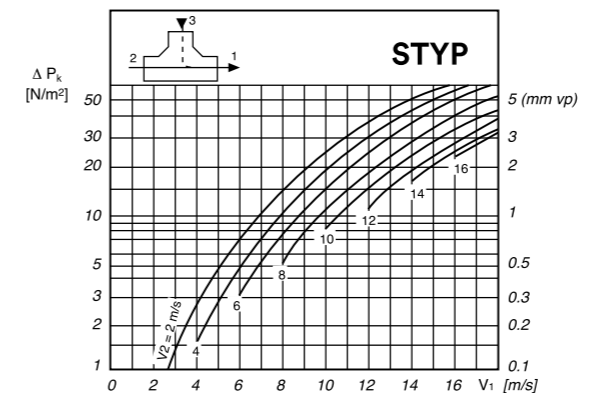
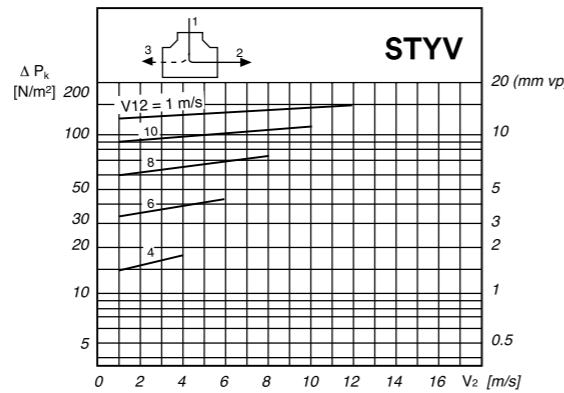
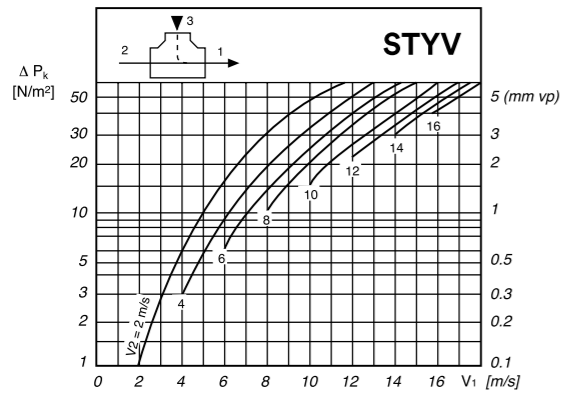
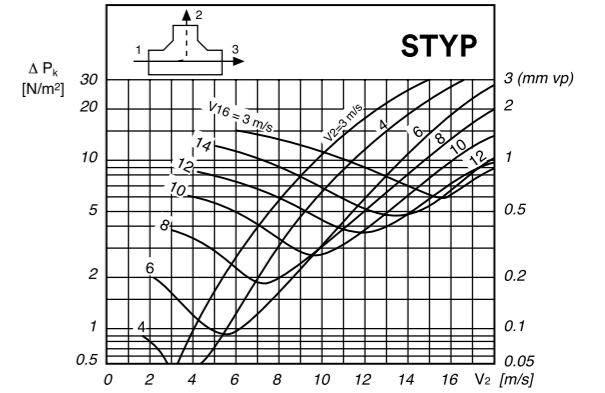
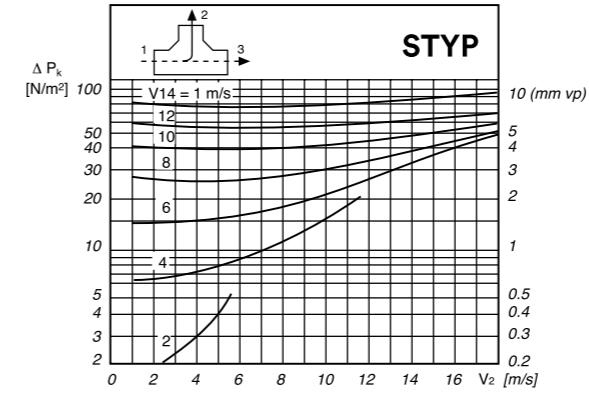
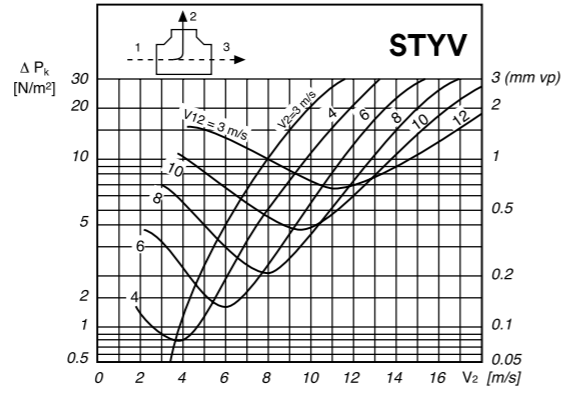
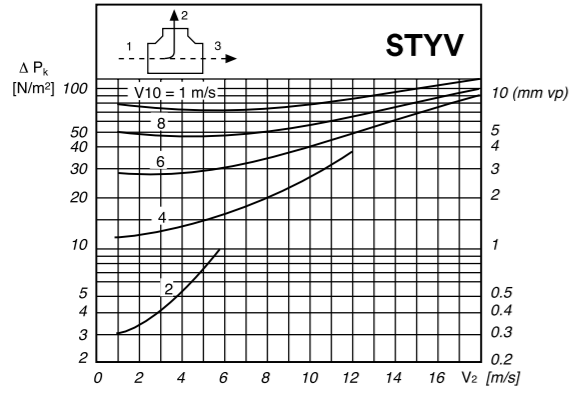


FLAT OVAL FITTINGS

FLAT OVAL FITTINGS

Technical Data

Technical Data

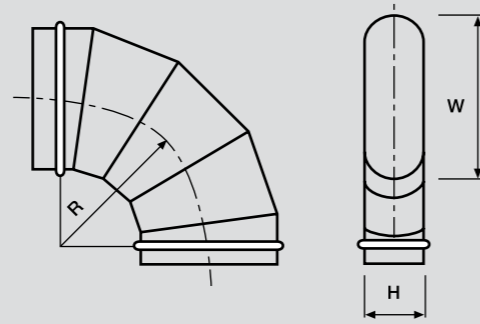




SKYV/90°



Dimensions



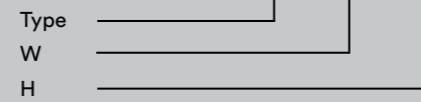
Description

Segmented Five Section Hard Bend 90° - Angle from 1° - 135°

- Joints and seams by continuous seam or stitch welding.
- R = 1.5 W, 5-gore bend
- R = W, 4-gore bend

Ordering

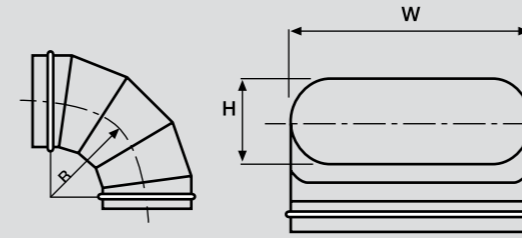
Product Code: SKYV/90 - aaa x bbb



W mm	H mm
500	150
600	150
600	200
800	200
500	250
600	250
800	250
1000	250
600	300
800	300
1000	300
1200	300
600	400
800	400
1000	400
1200	400

• For other available sizes, see pages 134 - 136.

Dimensions



SKYP/90°



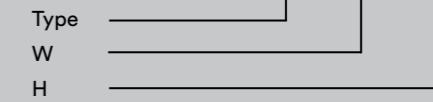
Description

Segmented Five Section Easy Bend 90° - Angle from 1° - 135°

- Joints and seams by continuous seam or stitch welding.
- R = 1.5H, 5-gore bend
- R = H, 4-gore bend

Ordering

Product Code: SKYP/90 - aaa x bbb



W mm	H mm
500	150
600	150
600	200
800	200
500	250
600	250
800	250
1000	250
600	300
800	300
1000	300
1200	300
600	400
800	400
1000	400
1200	400

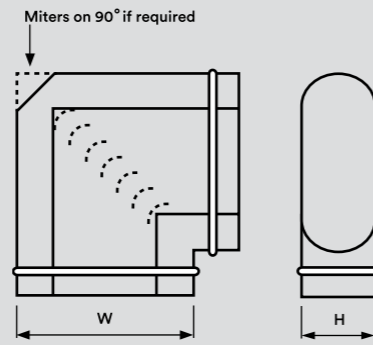
• For other available sizes, see pages 134 - 136.

MITERED HARD BEND

SKYVM/90°



Dimensions



Description

Mitered Hard Bend - Angle from 1° - 90°  
 • Joints and seams by continuous seam or stitch welding.

Ordering

Product Code: SKYVM/90 - aaa x bbb

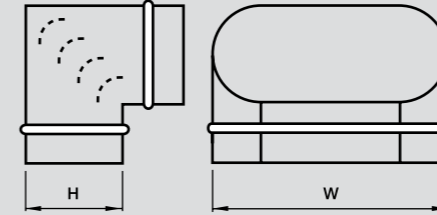


W mm	H mm
500	150
600	150
600	200
800	200
500	250
600	250
800	250
1000	250
600	300
800	300
1000	300
1200	300
600	400
800	400
1000	400
1200	400
1400	400

• For other available sizes, see pages 134 - 136.

MITERED EASY BEND

Dimensions



SKYPM/90°



Description

Mitered Easy Bend - Angle from 1° - 90°  
 • Joints and seams by continuous seam or stitch welding.

Ordering

Product Code: SKYPM/90 - aaa x bbb



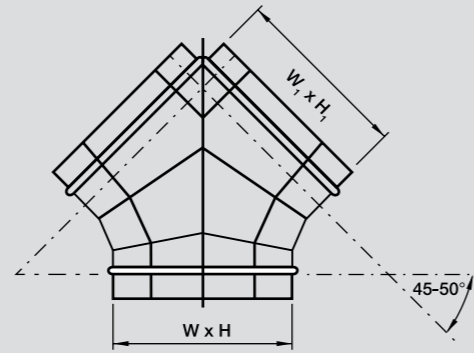
W mm	H mm
500	150
600	150
600	200
800	200
500	250
600	250
800	250
1000	250
600	300
800	300
1000	300
1200	300
600	400
800	400
1000	400
1200	400
1400	400

• For other available sizes, see pages 134 - 136.

SKKY/45° - 50°



Dimensions



Description

Twin Bend - Angle from 45° - 50°  
 • Joints and seams by continuous seam or stitch welding.

Ordering

Product Code: SKKY/45 - aaa x bbb / ccc x ddd

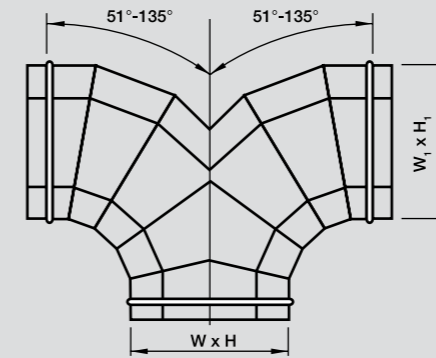
Type \_\_\_\_\_  
 W \_\_\_\_\_  
 H \_\_\_\_\_  
 W<sub>1</sub> \_\_\_\_\_  
 H<sub>1</sub> \_\_\_\_\_

W mm	H mm	W <sub>1</sub> mm	H <sub>1</sub> mm
500	150	500	150
600	150	600	150
600	200	600	200
800	200	800	200
500	250	500	250
600	250	600	250
800	250	800	250
1000	250	1000	250
600	300	600	300
800	300	800	300
1000	300	1000	300
1200	300	1200	300
600	400	600	400
800	400	800	400
1000	400	1000	400
1200	400	1200	400
1400	400	1400	400

W mm	H mm	W <sub>1</sub> mm	H <sub>1</sub> mm
1600	400	1600	400
1000	500	1000	500
1200	500	1200	500
1400	500	1400	500
1600	500	1600	500
1700	500	1700	500
1800	500	1800	500

• For other available sizes, see pages 134 - 136.

Dimensions



SKKY/51° - 135°



Description

Twin Bend - Angle from 51° - 135°  
 • Joints and seams by continuous seam or stitch welding.

Ordering

Product Code: SKKY/51° - aaa x bbb / ccc x ddd

Type \_\_\_\_\_  
 W \_\_\_\_\_  
 H \_\_\_\_\_  
 W<sub>1</sub> \_\_\_\_\_  
 H<sub>1</sub> \_\_\_\_\_

W mm	H mm	W <sub>1</sub> mm	H <sub>1</sub> mm
500	150	500	150
600	150	600	150
600	200	600	200
800	200	800	200
500	250	500	250
600	250	600	250
800	250	800	250
1000	250	1000	250
600	300	600	300
800	300	800	300
1000	300	1000	300
1200	300	1200	300
600	400	600	400
800	400	800	400
1000	400	1000	400
1200	400	1200	400
1400	400	1400	400

W mm	H mm	W <sub>1</sub> mm	H <sub>1</sub> mm
1600	400	1600	400
1000	500	1000	500
1200	500	1200	500
1400	500	1400	500
1600	500	1600	500
1700	500	1700	500
1800	500	1800	500

• For other available sizes, see pages 134 - 136.

# HORIZONTAL TEE

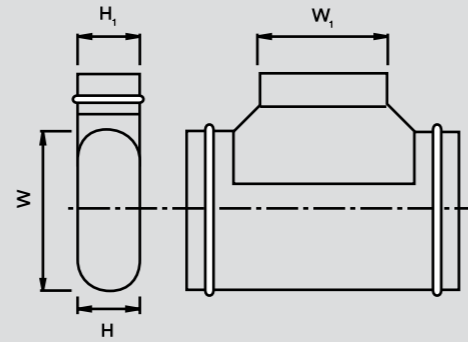


SAFID OVAL

STYV



Dimensions



### Description

Horizontal Tee  
 • Joints and seams by continuous seam or stitch welding.

### Ordering

Product Code: STYV - aaa x bbb / ccc x ddd

Type \_\_\_\_\_  
 W \_\_\_\_\_  
 H \_\_\_\_\_  
 W<sub>1</sub> \_\_\_\_\_  
 H<sub>1</sub> \_\_\_\_\_

W mm	H mm	W <sub>1</sub> mm	H <sub>1</sub> mm
550	150	500	150
600	150	500	150
600	200	500	200
800	200	500	200
550	250	500	250
600	250	500	250
800	250	500	250
1000	250	600	250
600	300	500	300
800	300	500	300
1000	300	600	300
1200	300	700	300
600	400	500	400
800	400	500	400
1000	400	600	400
1200	400	700	400
1400	400	700	400

W mm	H mm	W <sub>1</sub> mm	H <sub>1</sub> mm
1600	400	800	400
1000	500	800	500
1200	500	800	500
1400	500	900	500
1600	500	900	500
1700	500	1000	500
1800	500	1000	500

• For other available sizes, see pages 134 - 136.

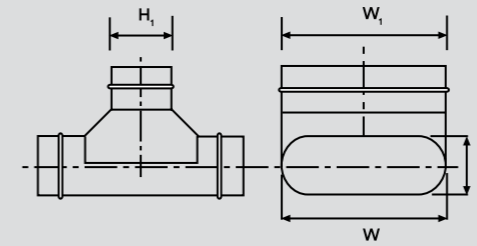
OVAL DUCT & FITTINGS



# VERTICAL TEE

SAFID OVAL

Dimensions



STYP



### Description

Vertical Tee  
 • Joints and seams by continuous seam or stitch welding.

### Ordering

Product Code: STYP - aaa x bbb / ccc x ddd

Type \_\_\_\_\_  
 W \_\_\_\_\_  
 H \_\_\_\_\_  
 W<sub>1</sub> \_\_\_\_\_  
 H<sub>1</sub> \_\_\_\_\_

W mm	H mm	W <sub>1</sub> mm	H <sub>1</sub> mm
500	150	500	150
600	150	600	150
600	200	600	200
800	200	800	200
500	250	500	250
600	250	600	250
800	250	800	250
1000	250	1000	250
600	300	600	300
800	300	800	300
1000	300	1000	300
1200	300	1200	300
600	400	600	400
800	400	800	400
1000	400	1000	400
1200	400	1200	400
1400	400	1400	400

W mm	H mm	W <sub>1</sub> mm	H <sub>1</sub> mm
1600	400	1600	400
1000	500	1000	500
1200	500	1200	500
1400	500	1400	500
1600	500	1600	500
1700	500	1700	500
1800	500	1800	500

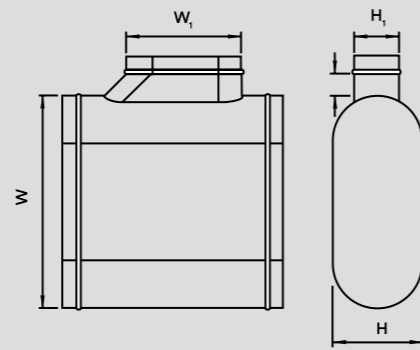
• For other available sizes, see pages 134 - 136.

OVAL DUCT & FITTINGS

STYVB



Dimensions



Description

Boot Tee  
 • Joints and seams by continuous seam or stitch welding.

Ordering

Product Code: STYVB - aaa x bbb / ccc x ddd

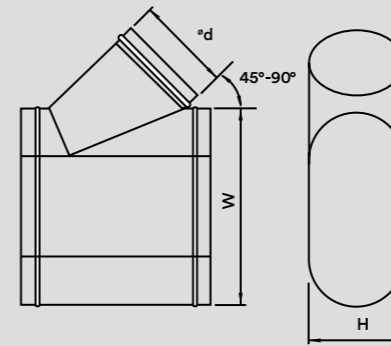
Type \_\_\_\_\_  
 W \_\_\_\_\_  
 H \_\_\_\_\_  
 W<sub>1</sub> \_\_\_\_\_  
 H<sub>1</sub> \_\_\_\_\_

W mm	H mm	W <sub>1</sub> mm	H <sub>1</sub> mm
550	150	500	150
600	150	500	150
600	200	500	150
800	200	500	150
550	250	500	200
600	250	500	200
800	250	500	200
1000	250	600	200
600	300	500	250
800	300	500	250
1000	300	600	250
1200	300	600	250
600	400	500	300
800	400	500	300
1000	400	600	300
1200	400	600	300
1400	400	650	300

W mm	H mm	W <sub>1</sub> mm	H <sub>1</sub> mm
1600	400	700	300
1000	500	600	400
1200	500	600	400
1400	500	650	400
1600	500	700	400
1700	500	750	400
1800	500	800	400

• For other available sizes, see pages 134 - 136.

Dimensions



STYP / 45° - 90°



Description

Lateral Tee - 45° - 90°  
 • Joints and seams by continuous seam or stitch welding.

Ordering

Product Code: STYP/45 - aaa x bbb / ccc

Type \_\_\_\_\_  
 W \_\_\_\_\_  
 H \_\_\_\_\_  
 ∅d \_\_\_\_\_

W mm	H mm	∅d mm
500	150	150
600	150	150
600	200	200
800	200	200
500	250	250
600	250	250
800	250	250
1000	250	250
600	300	300
800	300	300
1000	300	300
1200	300	300
600	400	400
800	400	400
1000	400	400
1200	400	400
1400	400	400

W mm	H mm	∅d mm
1600	400	400
1000	500	500
1200	500	500
1400	500	500
1600	500	500
1700	500	500
1800	500	500

• For other available sizes, see pages 134 - 136.

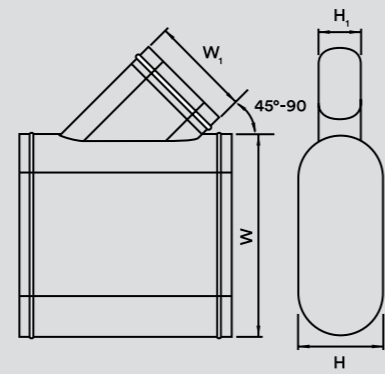


LATERAL TEE

STYVS/45° - 90°



Dimensions



Description

Lateral Tee - 45° - 90°  
 • Joints and seams by continuous seam or stitch welding.

Ordering

Product Code: STYVS/45 - aaa x bbb / ccc x ddd

Type \_\_\_\_\_  
 W \_\_\_\_\_  
 H \_\_\_\_\_  
 W<sub>1</sub> \_\_\_\_\_  
 H<sub>1</sub> \_\_\_\_\_

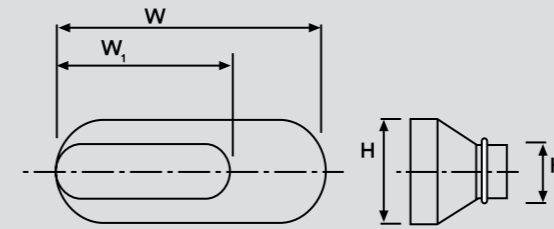
W mm	H mm	W <sub>1</sub> mm	H <sub>1</sub> mm
550	150	500	150
600	150	500	150
600	200	500	150
800	200	500	150
550	250	500	200
600	250	500	200
800	250	500	200
1000	250	600	200
600	300	500	250
800	300	500	250
1000	300	600	250
1200	300	600	250
600	400	500	300
800	400	500	300
1000	400	600	300
1200	400	600	300
1400	400	650	300

W mm	H mm	W <sub>1</sub> mm	H <sub>1</sub> mm
1600	400	700	300
1000	500	600	400
1200	500	600	400
1400	500	650	400
1600	500	700	400
1700	500	750	400
1800	500	800	400

• For other available sizes, see pages 134 - 136.

ECCENTRIC REDUCER

Dimensions



SMYO



Description

Eccentric Reducer  
 • Joints and seams by continuous seam or stitch welding.

Ordering

Product Code: SMYO - aaa x bbb / ccc x ddd

Type \_\_\_\_\_  
 W \_\_\_\_\_  
 H \_\_\_\_\_  
 W<sub>1</sub> \_\_\_\_\_  
 H<sub>1</sub> \_\_\_\_\_

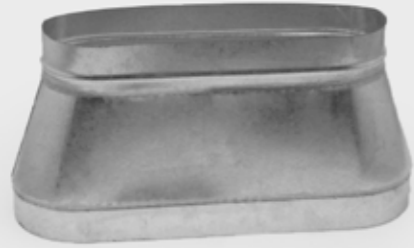
W mm	H mm	W <sub>1</sub> mm	H <sub>1</sub> mm
550	150	500	150
600	150	500	150
600	200	500	150
800	200	600	150
550	250	500	200
600	250	500	200
800	250	600	200
1000	250	800	200
600	300	500	250
800	300	600	250
1000	300	800	250
1200	300	1000	250
700	400	600	300
800	400	700	300
1000	400	800	300
1200	400	1000	300
1400	400	1200	300

W mm	H mm	W <sub>1</sub> mm	H <sub>1</sub> mm
1600	400	1400	300
1000	500	900	400
1200	500	1000	400
1400	500	1200	400
1600	500	1400	400
1700	500	1500	400
1800	500	1600	400

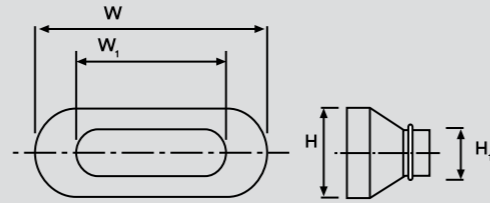
• For other available sizes, see pages 134 - 136.

CENTRIC REDUCER

SMY



Dimensions



Description

Centric Reducer

- Joints and seams by continuous seam or stitch welding.

Ordering

Product Code: SMY - aaa x bbb / ccc x ddd

Type \_\_\_\_\_  
 W \_\_\_\_\_  
 H \_\_\_\_\_  
 W<sub>1</sub> \_\_\_\_\_  
 H<sub>1</sub> \_\_\_\_\_

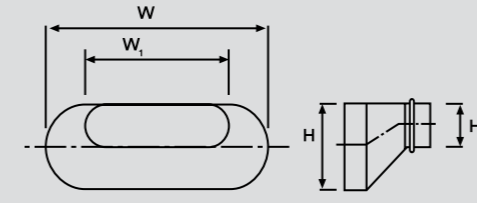
W mm	H mm	W <sub>1</sub> mm	H <sub>1</sub> mm
550	150	500	150
600	150	500	150
600	200	500	150
800	200	600	150
550	250	500	200
600	250	500	200
800	250	600	200
1000	250	800	200
600	300	500	250
800	300	600	250
1000	300	800	250
1200	300	1000	250
700	400	600	300
800	400	700	300
1000	400	800	300
1200	400	1000	300
1400	400	1200	300

W mm	H mm	W <sub>1</sub> mm	H <sub>1</sub> mm
1600	400	1400	300
1000	500	900	400
1200	500	1000	400
1400	500	1200	400
1600	500	1400	400
1700	500	1500	400
1800	500	1600	400

• For other available sizes, see pages 134 - 136.

CENTRIC - ECCENTRIC REDUCER

Dimensions



SMYK



Description

Centric - Eccentric Reducer

- Joints and seams by continuous seam or stitch welding.

Ordering

Product Code: SMYK - aaa x bbb / ccc x ddd

Type \_\_\_\_\_  
 W \_\_\_\_\_  
 H \_\_\_\_\_  
 W<sub>1</sub> \_\_\_\_\_  
 H<sub>1</sub> \_\_\_\_\_

W mm	H mm	W <sub>1</sub> mm	H <sub>1</sub> mm
550	150	500	150
600	150	500	150
600	200	500	150
800	200	600	150
550	250	500	200
600	250	500	200
800	250	600	200
1000	250	800	200
600	300	500	250
800	300	600	250
1000	300	800	250
1200	300	1000	250
700	400	600	300
800	400	700	300
1000	400	800	300
1200	400	1000	300
1400	400	1200	300

W mm	H mm	W <sub>1</sub> mm	H <sub>1</sub> mm
1600	400	1400	300
1000	500	900	400
1200	500	1000	400
1400	500	1200	400
1600	500	1400	400
1700	500	1500	400
1800	500	1600	400

• For other available sizes, see pages 134 - 136.

OVAL TO ROUND TRANSITION

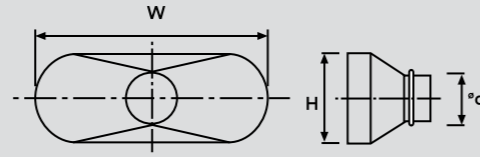


SAFID OVAL

SMYP



Dimensions



Description

Oval to Round Transition  
 • Joints and seams by continuous seam or stitch welding.

Ordering

Product Code: SMYP - aaa x bbb / ccc

Type \_\_\_\_\_  
 W \_\_\_\_\_  
 H \_\_\_\_\_  
 $\varnothing d$  \_\_\_\_\_

W mm	H mm	$\varnothing d$ mm
500	150	160
600	150	200
600	200	250
800	200	250
500	250	200
600	250	250
800	250	250
1000	250	250
600	300	315
800	300	315
1000	300	315
1200	300	400
600	400	400
800	400	400
1000	400	500
1200	400	500
1400	400	500

W mm	H mm	$\varnothing d$ mm
1600	400	630
1000	500	500
1200	500	630
1400	500	630
1600	500	630
1700	500	630
1800	500	630

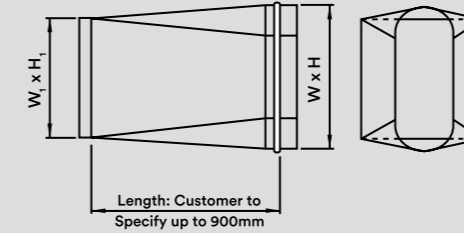
• For other available sizes, see pages 134 - 136.

SQUARE TO OVAL TRANSITION



SAFID OVAL

Dimensions



Length: Customer to Specify up to 900mm

Longer lengths available on request

SMYR



Description

Concentric and Eccentric, Square to Oval Transformation  
 • Joints and seams by continuous seam or stitch welding.

Ordering

Product Code: SMYR - aaa x bbb / ccc x ddd

Type \_\_\_\_\_  
 W \_\_\_\_\_  
 H \_\_\_\_\_  
 W<sub>1</sub> \_\_\_\_\_  
 H<sub>1</sub> \_\_\_\_\_

W mm	H mm	W <sub>1</sub> mm	H <sub>1</sub> mm
500	150	400	200
600	150	450	200
600	200	500	250
800	200	600	250
500	250	400	300
600	250	500	300
800	250	600	300
1000	250	800	300
600	300	500	350
800	300	600	350
1000	300	800	350
1200	300	1000	350
600	400	550	450
800	400	700	450
1000	400	850	450
1200	400	1050	450
1400	400	1100	500

W mm	H mm	W <sub>1</sub> mm	H <sub>1</sub> mm
1600	400	1250	500
1000	500	900	550
1200	500	1100	550
1400	500	1250	550
1600	500	1450	550
1700	500	1500	550
1800	500	1600	550

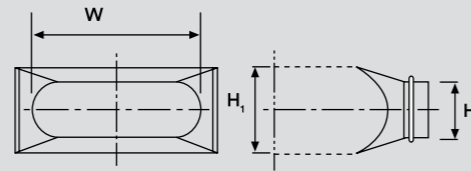
• For other available sizes, see pages 134 - 136.

OVAL DUCT & FITTINGS

OVAL DUCT & FITTINGS

SLKP

Dimensions



Description

Collar Saddle  
 • Joints and seams by continuous seam or stitch welding.

Ordering

Product Code: SLKP - aaa x bbb / ccc

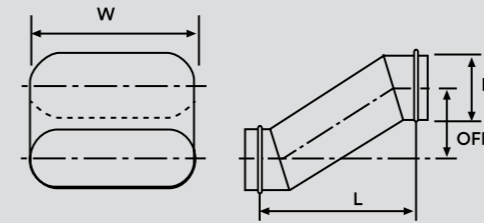
Type \_\_\_\_\_  
 W \_\_\_\_\_  
 H \_\_\_\_\_  
 H<sub>1</sub> \_\_\_\_\_

H <sub>1</sub> mm	W mm	H mm
150	500	150
150	600	150
200	600	200
200	800	200
250	500	250
250	600	250
250	800	250
250	1000	250
300	600	300
300	800	300
300	1000	300
300	1200	300
400	600	400
400	800	400
400	1000	400
400	1200	400
400	1400	400

H <sub>1</sub> mm	W mm	H mm
400	1600	400
500	1000	500
500	1200	500
500	1400	500
500	1600	500
500	1700	500
500	1800	500

• For other available sizes, see pages 134 - 136.

Dimensions



Description

Offset  
 • Joints and seams by continuous seam or stitch welding.

Ordering

Product Code: SOF - aaa x bbb / ccc

Type \_\_\_\_\_  
 W \_\_\_\_\_  
 H \_\_\_\_\_  
 Off \_\_\_\_\_

W mm	H mm	Off mm	L mm
500	150	200	447
600	150	200	447
600	200	200	461
800	200	200	461
500	250	300	646
600	250	300	464
800	250	300	646
1000	250	300	646
600	300	350	747
800	300	350	747
1000	300	350	747
1200	300	350	747
600	400	450	946
800	400	450	946
1000	400	450	946
1200	400	450	946
1400	400	450	946

W mm	H mm	Off mm	L mm
1600	400	450	946
1000	500	550	1147
1200	500	550	1147
1400	500	550	1147
1600	500	550	1147
1700	500	550	1147
1800	500	550	1147

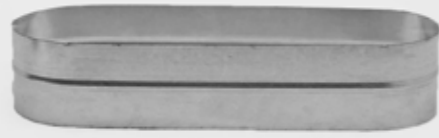
• For other available sizes, see pages 134 - 136.

MALE COUPLING

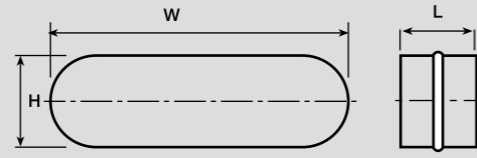


SAFID OVAL

SLYP



Dimensions



Description

Male Coupling  
 • Joints and seams by continuous seam or stitch welding.

Ordering

Product Code: SLYP - aaa x bbb  
 Type \_\_\_\_\_  
 W \_\_\_\_\_  
 H \_\_\_\_\_

W mm	H mm	L mm
500	150	100
600	150	100
600	200	100
800	200	100
500	250	100
600	250	100
800	250	100
1000	250	100
600	300	100
800	300	100
1000	300	100
1200	300	100
600	400	100
800	400	100
1000	400	100
1200	400	100
1400	400	100
1600	400	100

W mm	H mm	L mm
1000	500	100
1200	500	100
1400	500	100
1600	500	100
1700	500	100
1800	500	100

• For other available sizes, see pages 134 - 136.

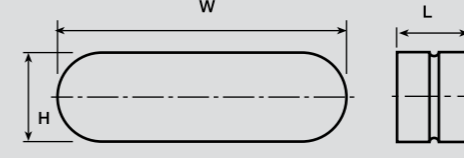
OVAl DUCT & FITTINGS



FEMALE COUPLING

SAFID OVAL

Dimensions



SLYO



Description

Female Coupling

Ordering

Product Code: SLYO - aaa x bbb  
 Type \_\_\_\_\_  
 W \_\_\_\_\_  
 H \_\_\_\_\_

W mm	H mm	L mm
500	150	100
600	150	100
600	200	100
800	200	100
500	250	100
600	250	100
800	250	100
1000	250	100
600	300	100
800	300	100
1000	300	100
1200	300	100
600	400	100
800	400	100
1000	400	100
1200	400	100
1400	400	100
1600	400	100


W mm	H mm	L mm
1000	500	100
1200	500	100
1400	500	100
1600	500	100
1700	500	100
1800	500	100

• For other available sizes, see pages 134 - 136.

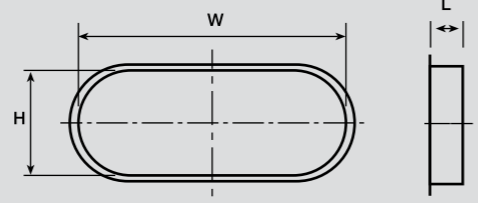
OVAl DUCT & FITTINGS



**STP**



**Dimensions**



**Description**

End Cap

- Joints and seams by continuous seam or stitch welding.

**Ordering**

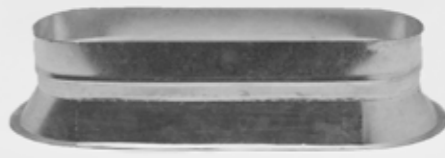
Product Code: STP - aaa x bbb

Type \_\_\_\_\_

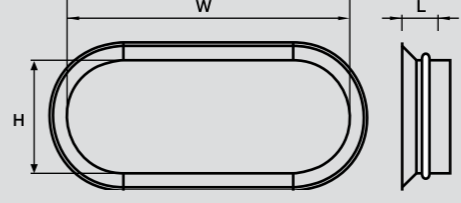
W \_\_\_\_\_

H \_\_\_\_\_

**SLKT**



**Dimensions**



**Description**

Take off

- Joints and seams by continuous seam or stitch welding.

**Ordering**

Product Code: SLKT - aaa x bbb

Type \_\_\_\_\_

W \_\_\_\_\_

H \_\_\_\_\_

W mm	H mm	L mm
500	150	50
600	150	50
600	200	50
800	200	50
500	250	50
600	250	50
800	250	50
1000	250	50
600	300	50
800	300	50
1000	300	50
1200	300	50
600	400	50
800	400	50
1000	400	50
1200	400	50
1400	400	50
1600	400	50

W mm	H mm	L mm
1000	500	50
1200	500	50
1400	500	50
1600	500	50
1700	500	50
1800	500	50

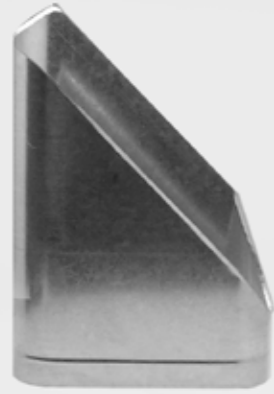
• For other available sizes, see pages 134 - 136.

W mm	H mm	L mm
500	150	118
600	150	118
600	200	118
800	200	118
500	250	118
600	250	118
800	250	118
1000	250	118
600	300	118
800	300	118
1000	300	118
1200	300	118
600	400	118
800	400	118
1000	400	118
1200	400	118
1400	400	118
1600	400	118

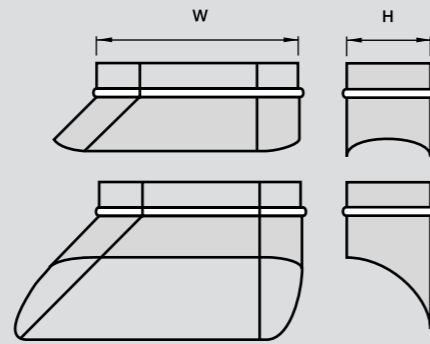
W mm	H mm	L mm
1000	500	118
1200	500	118
1400	500	118
1600	500	118
1700	500	118
1800	500	118

• For other available sizes, see pages 134 - 136.

SBLKP



Dimensions



Description

Hard Boot  
 • Joints and seams by continuous seam or stitch welding.

Ordering

Product Code: SBLKP - aaa x bbb  
 Type \_\_\_\_\_  
 W \_\_\_\_\_  
 H \_\_\_\_\_

W mm	H mm
500	150
600	150
600	200
800	200
500	250
600	250
800	250
1000	250
600	300
800	300
1000	300
1200	300
600	400
800	400
1000	400
1200	400
1400	400

500	150
600	150
600	200
800	200
500	250
600	250
800	250
1000	250
600	300
800	300
1000	300
1200	300
600	400
800	400
1000	400
1200	400
1400	400

600	150
600	200
800	200
500	250
600	250
800	250
1000	250
600	300
800	300
1000	300
1200	300
600	400
800	400
1000	400
1200	400
1400	400

600	200
800	200
500	250
600	250
800	250
1000	250
600	300
800	300
1000	300
1200	300
600	400
800	400
1000	400
1200	400
1400	400

800	200
500	250
600	250
800	250
1000	250
600	300
800	300
1000	300
1200	300
600	400
800	400
1000	400
1200	400
1400	400

500	250
600	250
800	250
1000	250
600	300
800	300
1000	300
1200	300
600	400
800	400
1000	400
1200	400
1400	400

600	250
800	250
1000	250
600	300
800	300
1000	300
1200	300
600	400
800	400
1000	400
1200	400
1400	400

800	250
600	250
800	250
1000	250
600	300
800	300
1000	300
1200	300
600	400
800	400
1000	400
1200	400
1400	400

600	250
800	250
1000	250
600	300
800	300
1000	300
1200	300
600	400
800	400
1000	400
1200	400
1400	400

800	250
600	250
800	250
1000	250
600	300
800	300
1000	300
1200	300
600	400
800	400
1000	400
1200	400
1400	400

600	250
800	250
1000	250
600	300
800	300
1000	300
1200	300
600	400
800	400
1000	400
1200	400
1400	400

800	250
600	250
800	250
1000	250
600	300
800	300
1000	300
1200	300
600	400
800	400
1000	400
1200	400
1400	400

600	250
800	250
1000	250
600	300
800	300
1000	300
1200	300
600	400
800	400
1000	400
1200	400
1400	400

800	250
600	250
800	250
1000	250
600	300
800	300
1000	300
1200	300
600	400
800	400
1000	400
1200	400
1400	400

600	250
800	250
1000	250
600	300
800	300
1000	300
1200	300
600	400
800	400
1000	400
1200	400
1400	400

800	250
600	250
800	250
1000	250
600	300
800	300
1000	300
1200	300
600	400
800	400
1000	400
1200	400
1400	400

600	250
800	250
1000	250
600	300
800	300
1000	300
1200	300
600	400
800	400
1000	400
1200	400
1400	400

800	250
600	250
800	250
1000	250
600	300
800	300
1000	300
1200	300
600	400
800	400
1000	400
1200	400
1400	400

W mm	H mm
1600	400
1000	500
1200	500
1400	500
1600	500
1700	500
1800	500

1600	400
1000	500
1200	500
1400	500
1600	500
1700	500
1800	500

1000	500
1200	500
1400	500
1600	500
1700	500
1800	500

1200	500
1400	500
1600	500
1700	500
1800	500

1400	500
1600	500
1700	500
1800	500

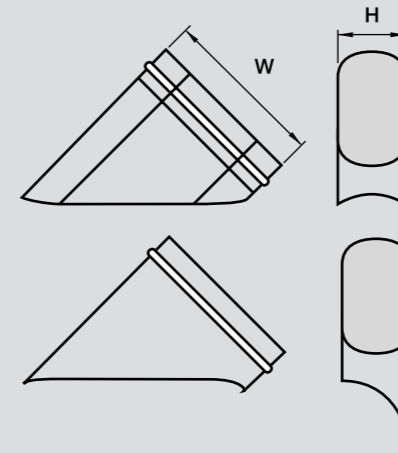
1600	500
1700	500
1800	500

1700	500
1800	500

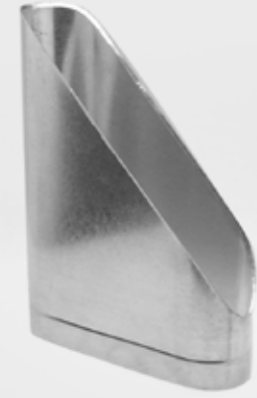
1800	500
------	-----

• For other available sizes, see pages 134 - 136.

Dimensions



SSLKP/45°



Description

Tangential and Centric Branch  
 • Joints and seams by continuous seam or stitch welding.

Ordering

Product Code: SSLKP/45 - aaa x bbb  
 Type \_\_\_\_\_  
 W \_\_\_\_\_  
 H \_\_\_\_\_

W mm	H mm
500	150
600	150
600	200
800	200
500	250
600	250
800	250
1000	250
600	300
800	300
1000	300
1200	300
600	400
800	400
1000	400
1200	400
1400	400

500	150
600	150
600	200
800	200
500	250
600	250
800	250
1000	250
600	300
800	300
1000	300
1200	300
600	400
800	400
1000	400
1200	400
1400	400

600	150
600	200
800	200
500	250
600	250
800	250
1000	250
600	300
800	300
1000	300
1200	300
600	400
800	400
1000	400
1200	400
1400	400

800	200
500	250
600	250
800	250
1000	250
600	300
800	300
1000	300
1200	300
600	400
800	400
1000	400
1200	400
1400	400

600	250
800	250
1000	250
600	300
800	300
1000	300
1200	300
600	400
800	400
1000	400
1200	400
1400	400

800	250
600	250
800	250
1000	250
600	300
800	300
1000	300
1200	300
600	400
800	400
1000	400
1200	400
1400	400

600	250
800	250
1000	250
600	300
800	300
1000	300
1200	300
600	400
800	400
1000	400
1200	400
1400	400

800	250
600	250
800	250
1000	250
600	300
800	300
1000	300
1200	300
600	400
800	400
1000	400
1200	400
1400	400

600	250
800	250
1000	250
600	300
800	300
1000	300
1200	300
600	400
800	400
1000	400
1200	400
1400	400

800	250
600	250
800	250
1000	250
600	300
800	300
1000	300
1200	300
600	400
800	400
1000	400
1200	400
1400	400

600	250
800	250
1000	250
600	300
800	300
1000	300
1200	300
600	400
800	400
1000	400
1200	400
1400	400

## SPECIFICATIONS FOR DUCT AND FITTINGS



### I. General

A. All single wall flat oval supply, return and exhaust ductwork shall be SAFID Oval as manufactured by SAFID or approved equal.

B. The contractor may, at his option, convert any or all rectangular ductwork to round and/or flat oval ductwork provided that the project space limitations are properly addressed and that the overall system design static pressure is not exceeded.

### II. Materials

A. Unless otherwise noted, all duct and fittings shall be G90 galvanized steel in accordance with ATSM A-924 and A-653 (previously known as A-527).

B. When specified on contract documents, stainless steel type 304 or type 316 in accordance with ASTM A-240 shall be provided.

C. All duct materials must be of such condition and quality that no solvents are required as surface preparation for painting.

### III. Construction

A. All duct and fittings shall be constructed as per SMACNA's Duct Construction Standards 2500 Pa (+10 in W.G.) as shown in the table below:

Flat Oval Duct and Fittings		
Major Axis (mm)	Galvanized Spiral Duct	Galvanized Fittings (ga)
500 - 600	24	20
650 - 900	24	20
950 - 1200	24	18
1250 - 1500	22	18
1550 - 1650	22	16
1700 - 1800	20	16
1800 AND ABOVE	18	16

\*For more details, see page 130

### B. Fittings:

1. All fittings/ends will be calibrated according to the manufacturers published dimensional tolerance standards.

2. The radius of all 90° and 45° elbows shall be 1.5 times the major axis for hard bend elbows and 1.5 times the minor axis for easy bend elbows.

3. All fittings that are of either spot welded or button punched construction shall be internally sealed. Fittings that are of continuously welded construction are not to be internally sealed.

### C. Flat Oval Spiral Duct:

1. All flat oval duct will be fabricated using spiral lockseam sheetmetal construction.

2. All flat oval spiral ducts are to be constructed with a corrugation between each spiral lockseam for added strength and rigidity - with the exception of duct from 500mm to 600mm wide.

### IV. Performance

A. The flat oval duct system performance will meet SMACNA's leakage Class 3 requirements.

